

NAME: \_\_\_\_\_

PHONE: \_\_\_\_\_

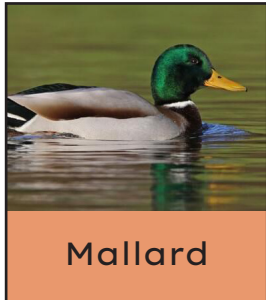
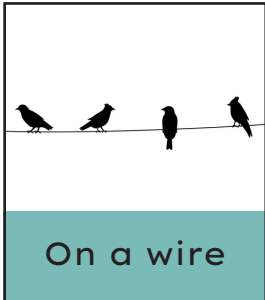
**B**

**I**

**R**

**D**

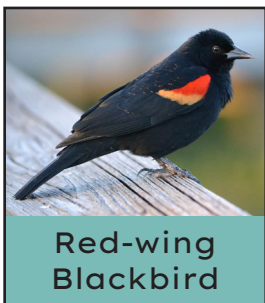
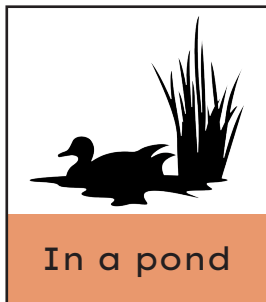
**S**



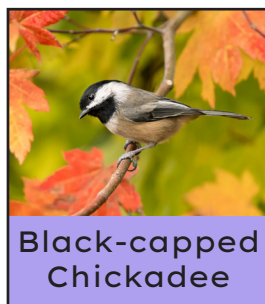
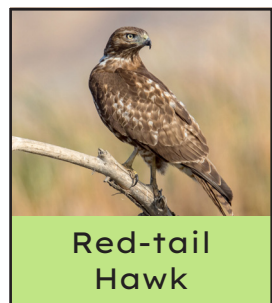
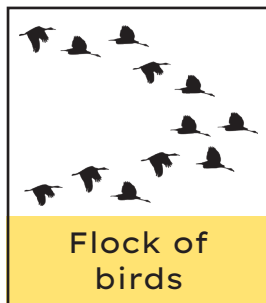
**FREE**



**FREE**



**FREE**



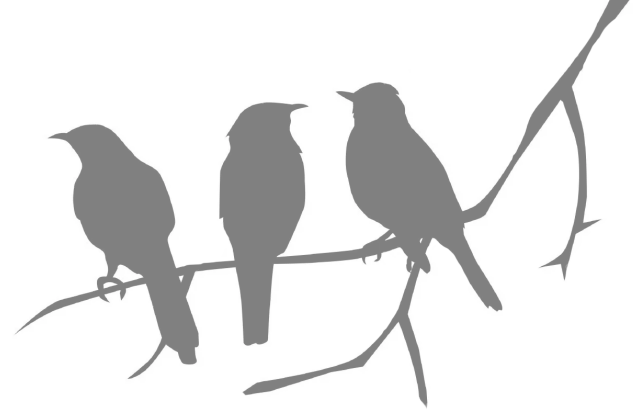
**FREE**



**FREE**



# BIRD BINGO



Friday, April 1 - Saturday, April 30

Kick off your spring fun with our Bird Bingo card!

Return your completed Bingo card for a chance to win a pair of bird-watching binoculars. Limit one entry per person.

## HOW TO PLAY:

- Complete five Bingo squares in a row to earn a Bingo (vertical, horizontal, or diagonal)
- Return completed Bingo card to Info Desk or fill out your Bingo card online at [mgpl.org/birds](http://mgpl.org/birds)
- Entries must be submitted by Saturday, April 30

## LOCAL BIRDING AREAS

The best birding locations are quiet, tree-lined paths near a water source. The birds listed on the bingo card are all birds that are common to the area. Here are some local options to help you complete your Bird Bingo card:

- Linne Woods
- Miami Woods
- North Shore Channel Trail
- Algonquin Woods



6140 Lincoln Avenue  
Morton Grove, IL 60053  
847-965-4220 | [mgpl.org](http://mgpl.org)